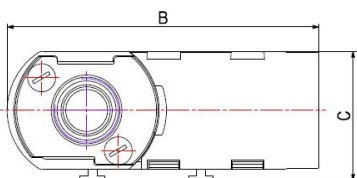
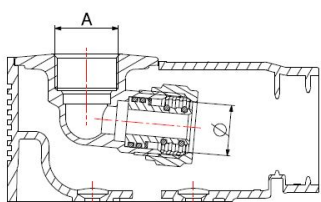
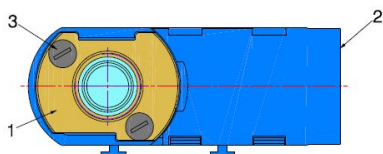
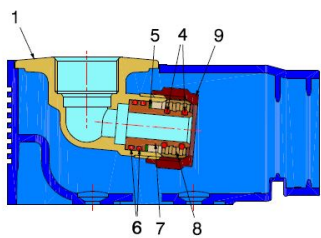
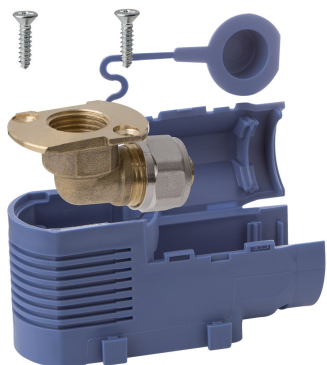


COMPRESSION FITTINGS FOR PEX-AL-PEX PIPES

EXTRACTABLE DHW FITTING - 1/2" F - 16X2

9645



- Extractable DHW fitting - 1/2" F - 16x2
- Thread female ISO 228
- Maximum operating pressure 10 bar
- Temperature range min 0°C - max +95°C
- Protection cover
- Modular assembly
- Mounting on bracket or with dowels

COMPONENTS

POS.	PART NAME	N°	MATERIAL
1	Fitting	1	CW617N UNI-EN 12165
2	Box	1	Plastic
3	Screw	2	Galvanised iron
4	O-Ring	2	EPDM Perox
5	Washer	1	PTFE
6	O-Ring	2	EPDM Perox
7	Hose-end	1	CW617N UNI-EN 12164
8	Ogive	1	CW617N UNI-EN 12164
9	Nut	1	CW617N UNI-EN 12165

DIMENSIONS

A	Ø	B	C
1/2"	16x2	101	42

PACKAGING

	16 - 1/2"
CODE	96450004
PCS BAG	1
PCS CARTON	30