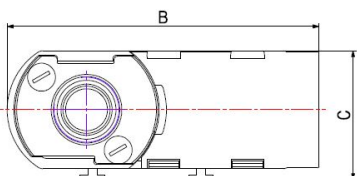
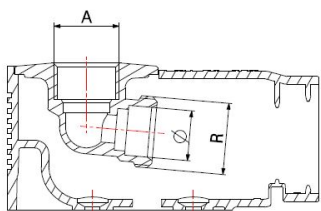
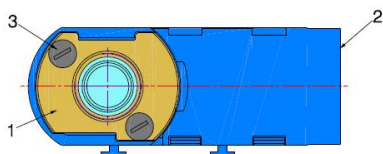
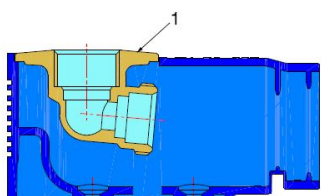
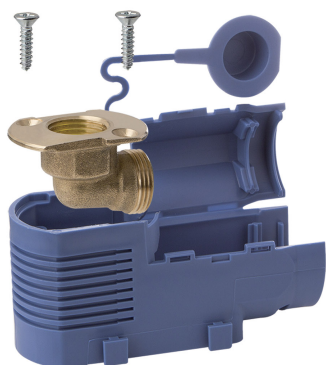


COMPRESSION FITTINGS FOR PEX-AL-PEX PIPES

EXTRACTABLE DHW FITTING 1/2" F – M 22X1,5

9641



- Extractable DHW fitting, 1/2" F - M22x1,5
- Thread female ISO 228
- Thread male M22x1,5
- Maximum operating pressure 10 bar
- Temperature range min 0°C - max +95°C
- Protection cover
- Modular assembly
- Mounting on bracket or with dowels

COMPONENTS

POS.	PART NAME	N°	MATERIAL
1	Fitting	1	CW617N UNI-EN 12165
2	Box	1	Plastic
3	Screw	2	Galvanised iron

DIMENSIONS

A	R	Ø	B	C
1/2"	M22x1,5	16	101	42

PACKAGING

	1/2" - M22x1,5
CODE	96410004
PCS BAG	1
PCS CARTON	30