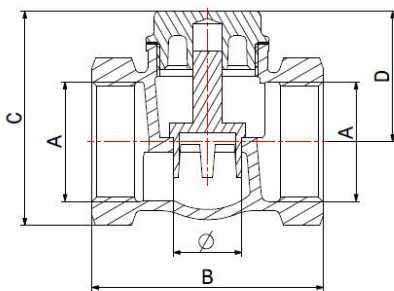
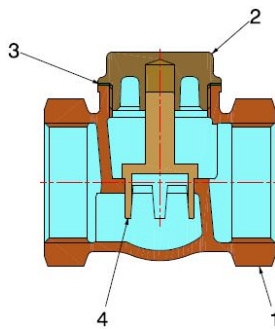


CHECK VALVES

**HORIZONTAL VALVE  
METAL SEAT**

3000



- Horizontal valve metal seat
- Thread ISO 228 - on request NPT
- Temperature range min -10°C - max +100°C / min +14°F - max +212°F

Valve suitable for distributing, regulating and interrupting liquids that could cause dezincification problems. It is especially recommended in harsh environments, such as marine ones, as long as the liquid is not salt water or with impurities that could damage the sealing.

Shipbuilding, plumbing, heating and industrial sectors are the ideal fields of application. The flow direction is indicated by an arrow on the valve body, while the installation can only be in horizontal position.

The seat tightness is guaranteed by a metal-to-metal seal.

**COMPONENTS**

POS.	PART NAME	N°	MATERIAL
1	Body	1	Bronze CC491K UNI-EN 1982:2000
2	Cap	1	CW617N UNI-EN 12164 (3/8" to 3/4") - CW617N UNI-EN 12165 (1" to 3")
3	Cap gasket	1	PTFE
4	Valve seal	1	CW617N UNI-EN 12164 (1/2" to 1.1/2") - CW617N UNI-EN 12165 (2" to 3")

**DIMENSIONS MM**

DN	A	B	C	D	Ø	PN
10	3/8"	50	42	29	11	16
15	1/2"	50	45	30	11	16
20	3/4"	55	52	33	13	16
25	1"	64	59	36	19	16
32	1.1/4"	73	71	42	23	16
40	1.1/2"	83	80	48,5	29	16
50	2"	88	95	56,5	36	16
65	2.1/2"	150	128	80,5	62	16

**PACKAGING**

	3/8"	1/2"	3/4"	1"	1.1/4"	1.1/2"	2"	2.1/2"
<b>CODE</b>	<b>3000010C00</b>	<b>3000010D00</b>	<b>3000010E00</b>	<b>3000010F00</b>	<b>3000010G00</b>	<b>3000010H00</b>	<b>3000010I00</b>	<b>3000010J00</b>
PCS BOX	20	20	15	10	-	-	-	-
PCS CARTON	160	160	120	80	50	40	30	8